



ELAD Application Note AN-005

Sharing FDM-DUO CAT USB Port using VSPE

Contents

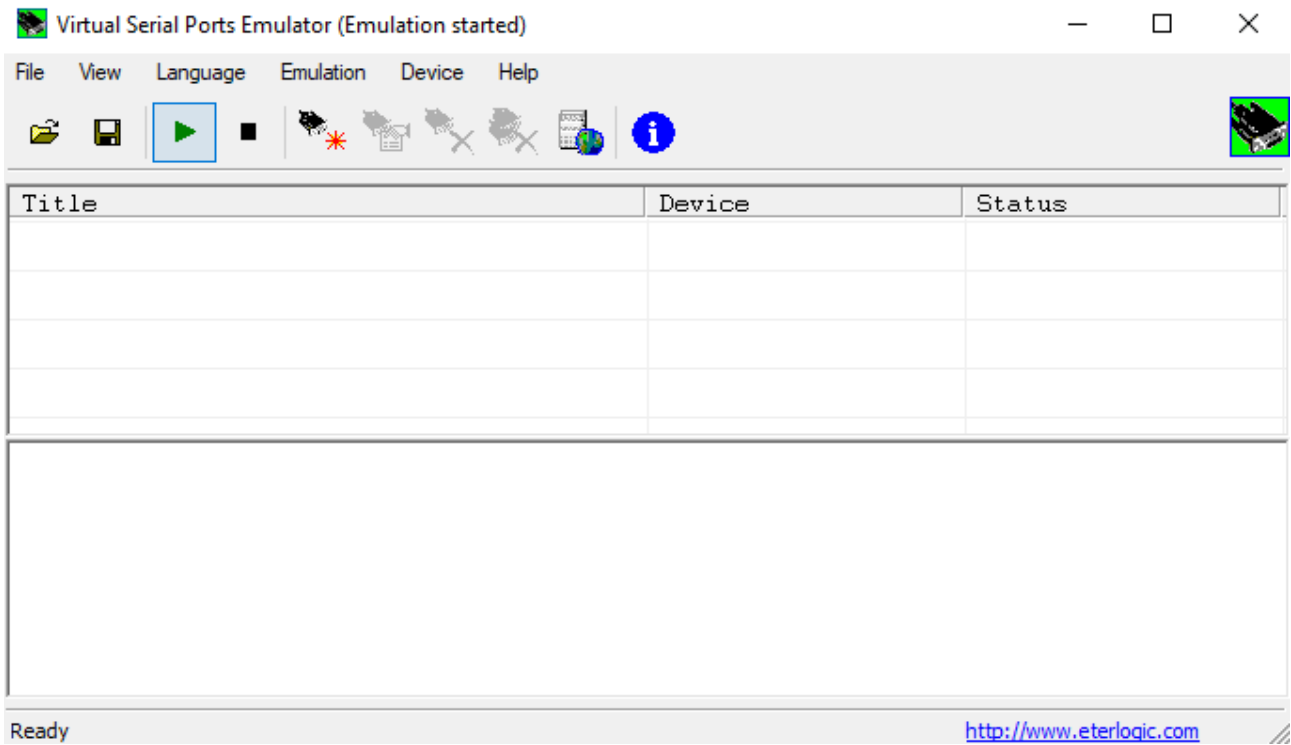
Introduction.....	2
1 VSPE settings	2
2 Start programs.....	5

Introduction

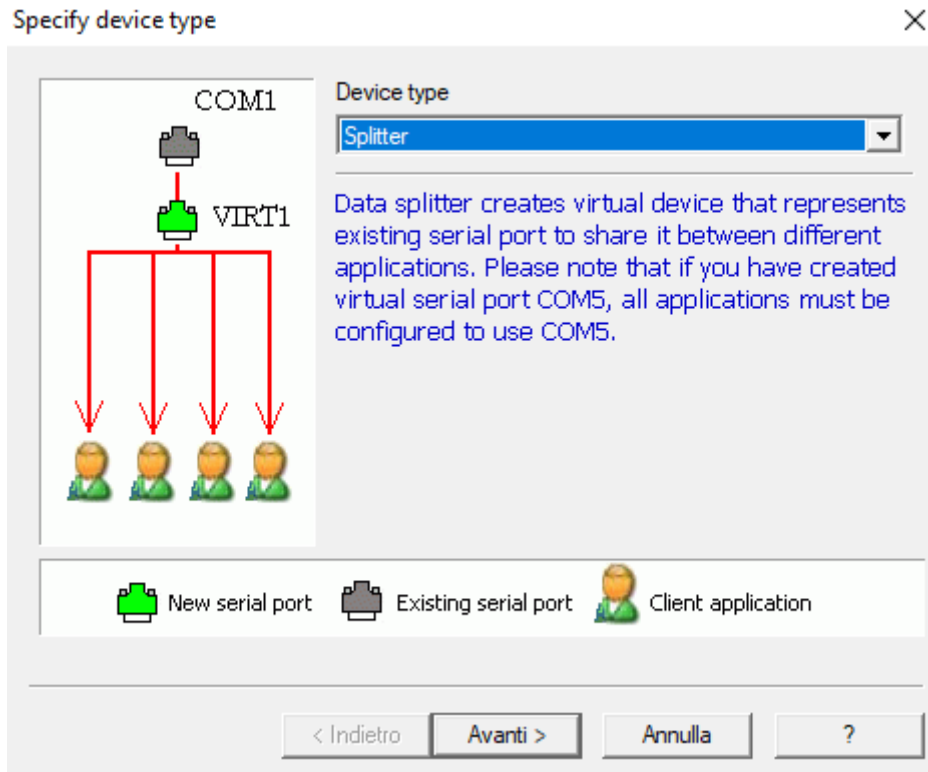
The purpose of this application note is to describe how to share the physical COM port of the FDM-DUO with more than one program using VSPE (Virtual Serial Port Emulator).

1 VSPE settings

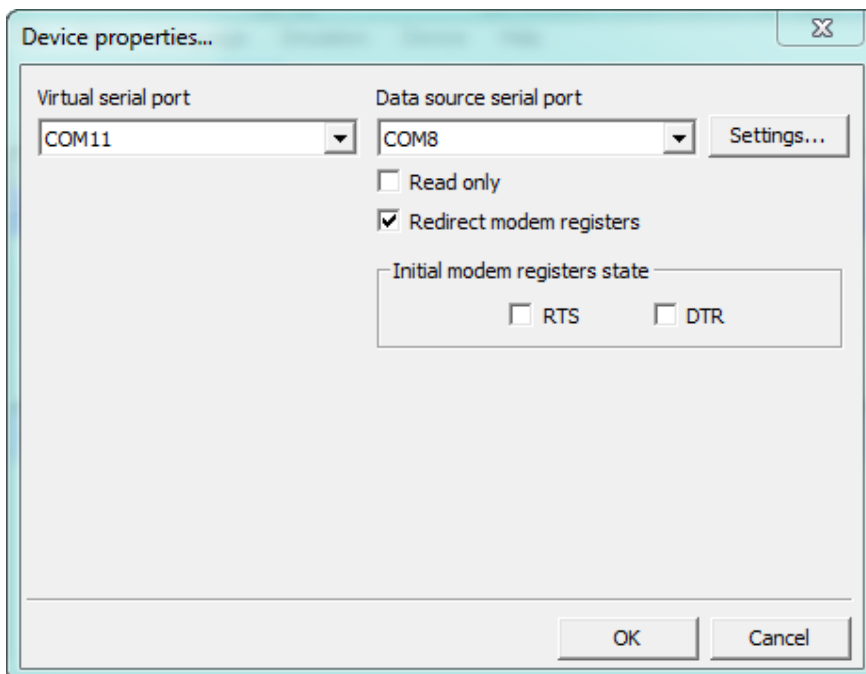
When starting VSPE the window below is shown.



Click on “Device” and then “Create”. The following window is displayed, choose “Splitter” in the Device Type menu.

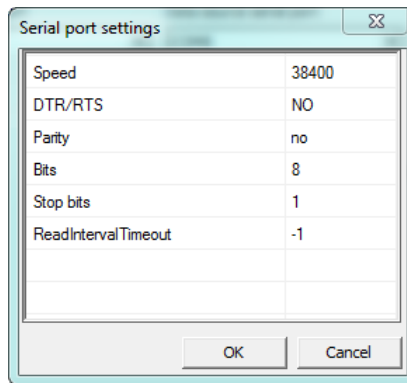


Clicking on “Next” the window below is shown.

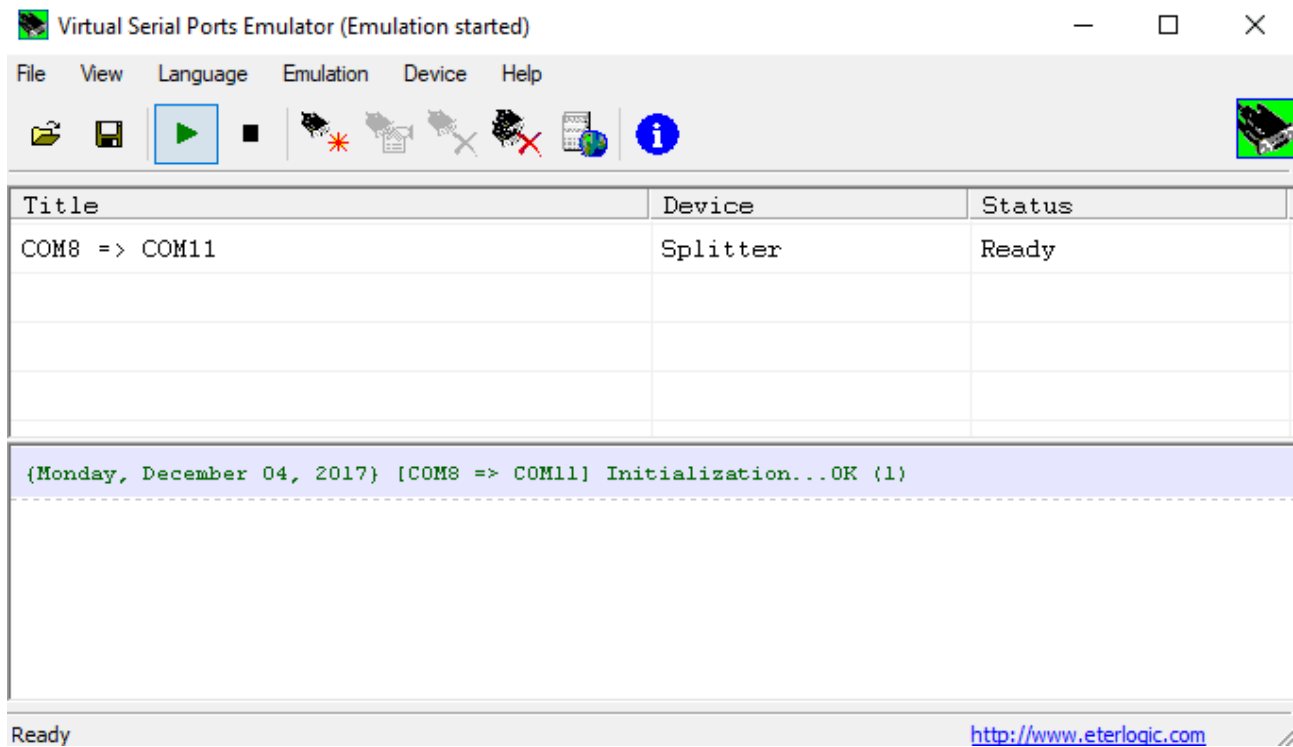


For the “Virtual serial port” select the number you prefer. For the “Data source serial port” select the one corresponding to the FDM-DUO CAT USB port. Leave the initial states of RTS and DTR unchecked to avoid undesirable transmission state during startup.

Click on “Settings” and choose the correct “Speed”. To know the current baud rate of the FDM-DUO, go to the menu 70 “CAT BAUD”.



Then click “Finish” and the main window shows the splitter.

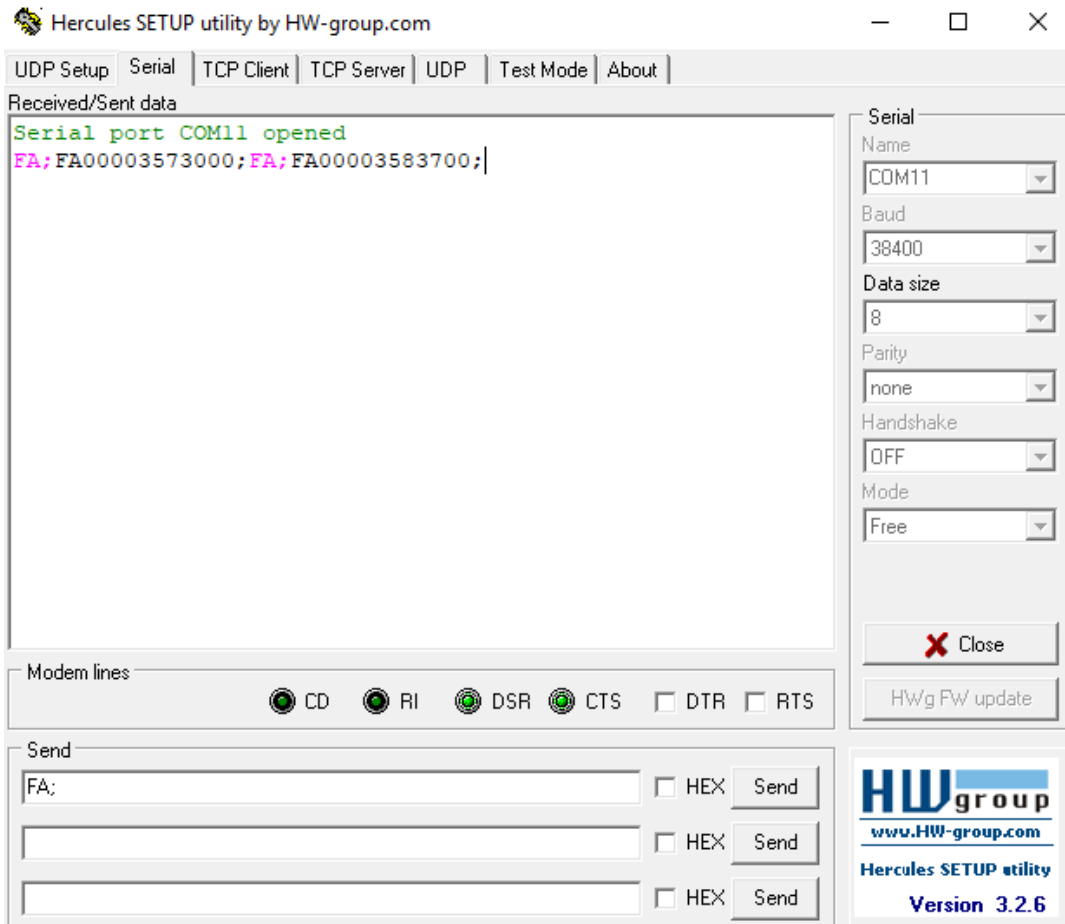


To start the emulation click on the green triangle, the “Status” should become “Ready”.

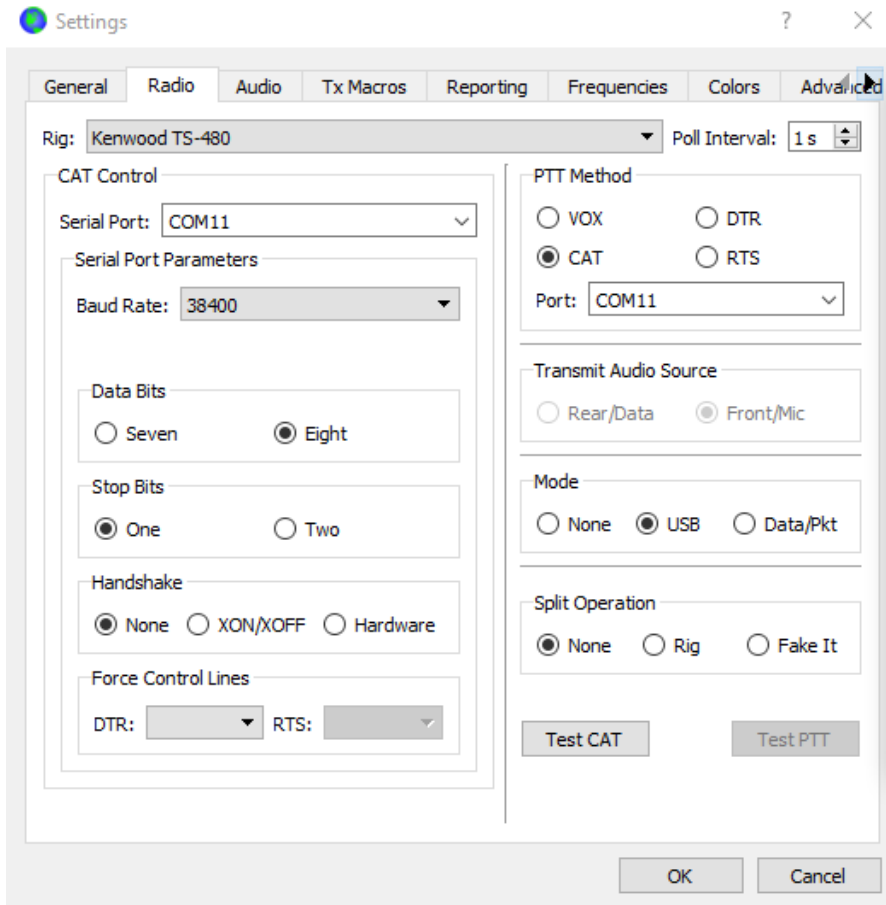
2 Start programs

Now you can start to use more than one program on the virtual serial port.

First start the Hercules terminal program. You can download it from https://www.hw-group.com/products/hercules/index_en.html. Open the port with the correct baud rate clicking on the "Open" button. Next send the "FA;" CAT command that give the current VFOA frequency using the "Send" button. You can insert another CAT command and make some more test.



Second, start WSJT-X for example and set it as shown below.



Now, both the programs are running on the same virtual port.